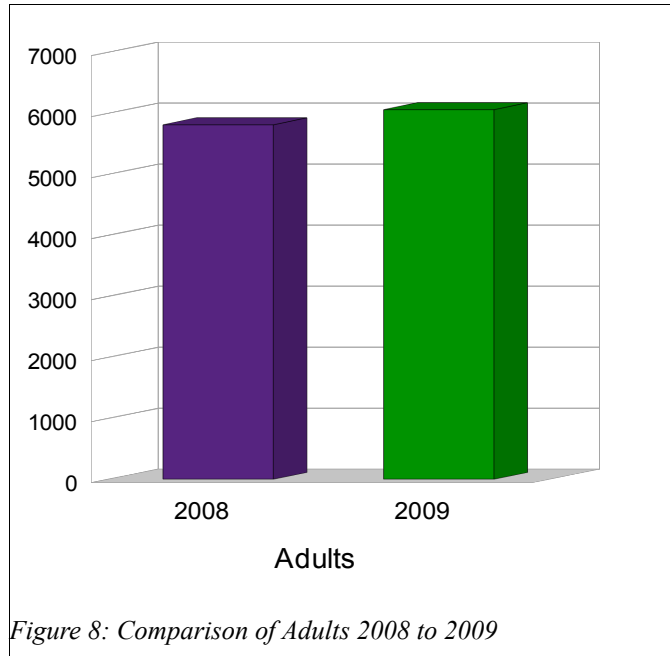
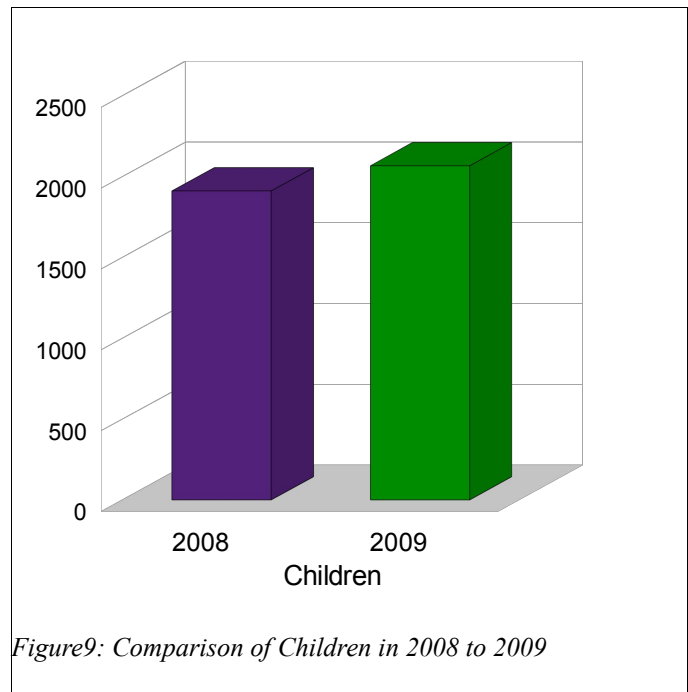


In the year 2008 as shown in Figure 8 we had served 5814 adults, while in 2009 we had an increase of 4.2% which resulted in 6061 adults being served.



Likewise Figure 9 demonstrates that in 2008 we served 1912 children and saw an increase of 7.6% when we served 2068 children in 2009



In 2008 we served 7726 clients in which 27.4% were considered children as seen in Figure 10.

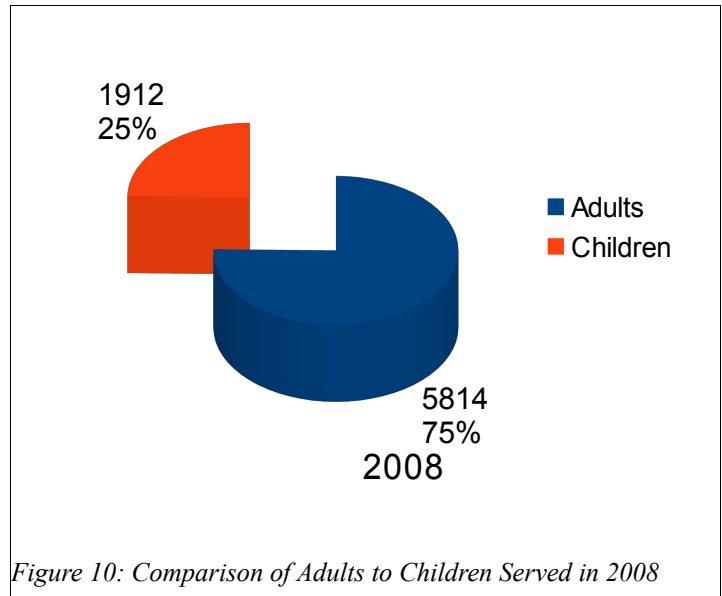


Figure 10: Comparison of Adults to Children Served in 2008

However in 2009 (Figure 11) we served 8129 clients in which children constituted for 25.3% despite increasing numbers over the last year.

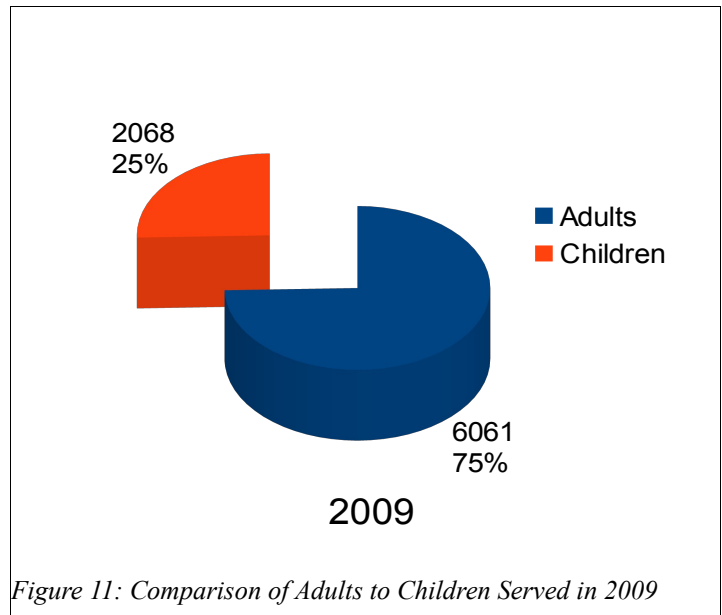


Figure 11: Comparison of Adults to Children Served in 2009

This is a break down of the Adult clients. As we can see the single sector makes 67% of the group, couples account for 21% while single parents make only 7% and seniors make 6%.

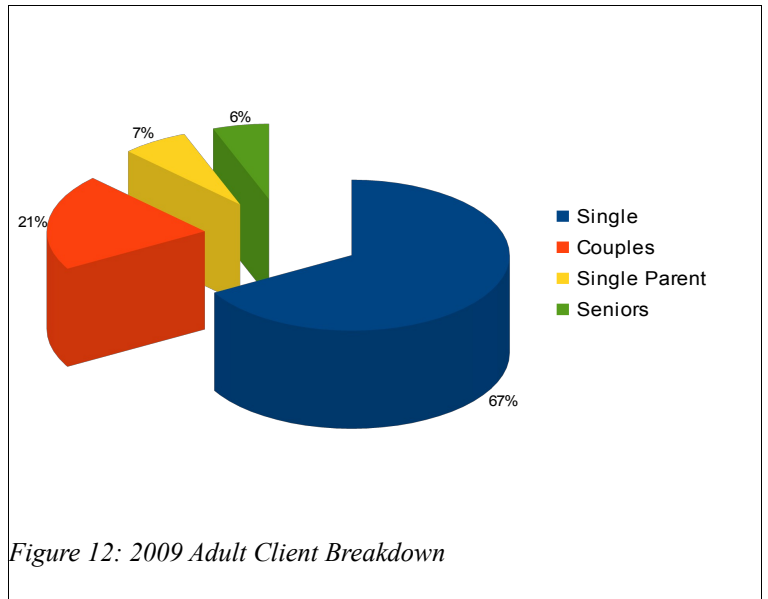


Figure 13 is the breakdown of children served over the months in 2009.

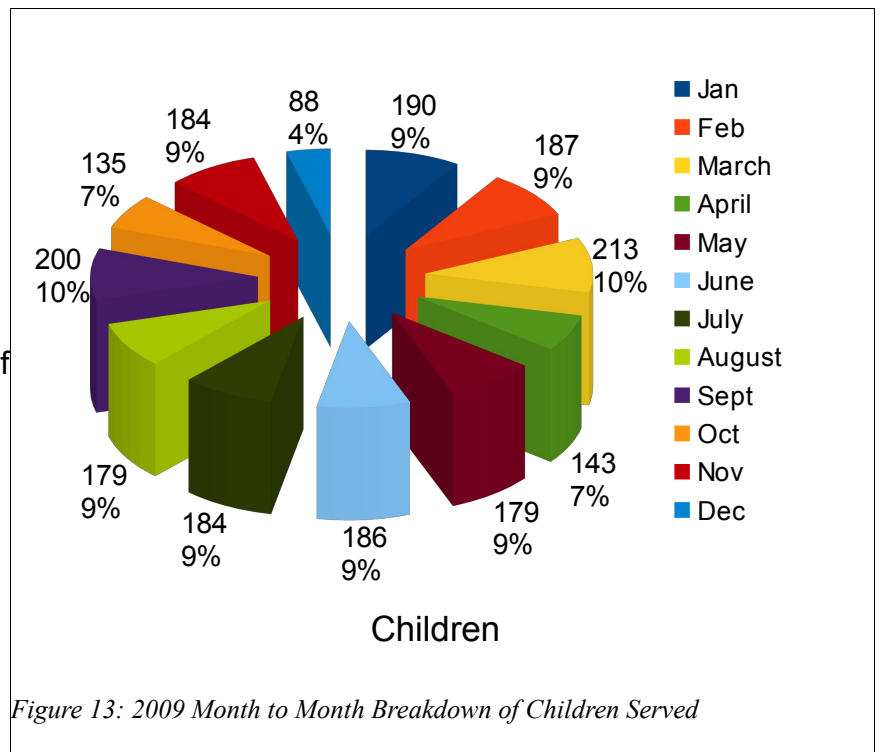


Figure 14 is the breakdown of adults served over the months in 2009.

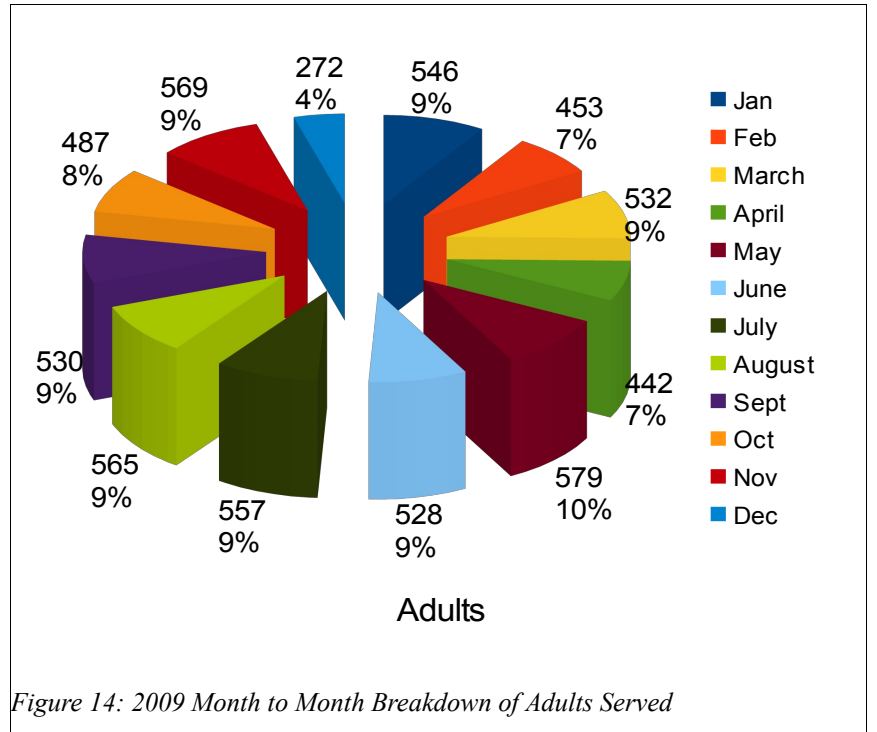


Figure 15 shows the difference between hampers distributed in 2008 and 2009. Full hampers had increased by 10.7% and emergency hampers had increased by 11.4%.

